

LEASEHOLD

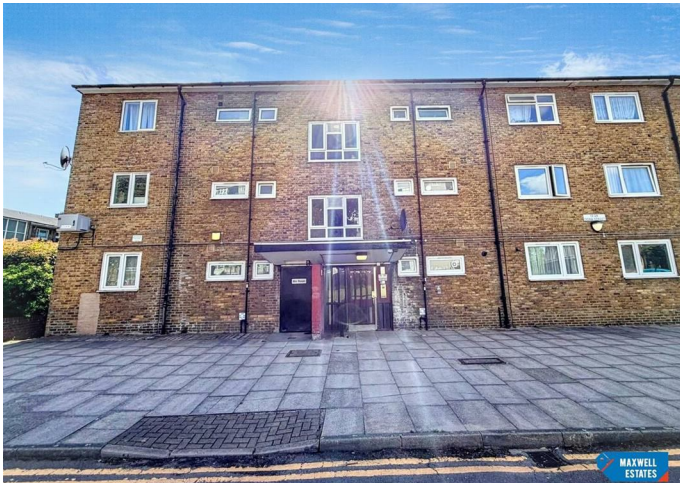


Not specified

18 DORA STREET,
LONDON, E14 7TP

£275,000

FEATURES



2 Bedroom Not specified located in London

Call us on

0208 959 0000

info@maxwellestates.co.uk

www.maxwellestates.co.uk

We are pleased to bring to market this property on Dora Street, Limehouse, offering an excellent opportunity for first-time buyers, professionals, or investors in one of East London's most sought-after postcodes.

Limehouse is a vibrant and characterful neighbourhood, more relaxed than neighbouring Canary Wharf yet exceptionally well connected. Dora Street sits within the Mile End ward, a well-established residential pocket with a strong sense of community and outstanding access to the wider city.

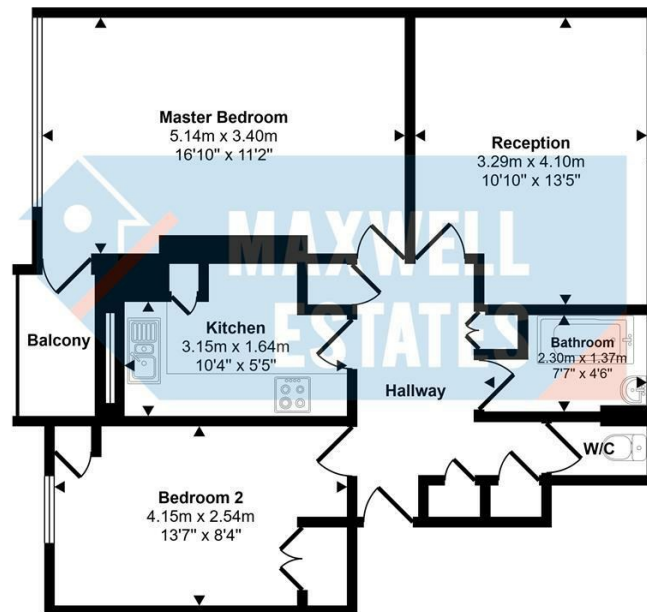
Transport links are a real highlight. Limehouse DLR station is close by with direct services to Canary Wharf, Bank, and Stratford, while Mile End Underground station serves the District, Hammersmith & City, and Central lines. National Rail from Limehouse connects to Fenchurch Street, and frequent buses run along Commercial Road into central London.

Locally, shops, cafés, and pharmacies are all within easy reach. Ropemakers Fields and Mile End Park provide excellent nearby green space, and the Thames Path and Regent's Canal offer scenic walking and cycling routes on the doorstep. The area has a lively dining and bar scene, with the iconic Art Deco Troxy venue a much-loved local landmark.

Council Tax Band

B

Approx Gross Internal Area
62 sq m / 666 sq ft



Floorplan

This floorplan is only for illustrative purposes and is not to scale. Measurements of rooms, doors, windows, and any items are approximate and no responsibility is taken for any error, omission or mis-statement. Icons of items such as bathroom suites are representations only and may not look like the real items. Made with Made Snappy 360.

Energy Efficiency Rating		Current	Potential
<i>Very energy efficient - lower running costs</i>			
(92 plus)	A		
(81-91)	B		
(69-80)	C		
(55-68)	D		
(39-54)	E		
(21-38)	F		
(1-20)	G		
<i>Not energy efficient - higher running costs</i>			
England & Wales		EU Directive 2002/91/EC	

Agents Note: Whilst every care has been taken to prepare these particulars, they are for guidance purposes only. All measurements are approximate and are for general guidance purposes only and whilst every care has been taken to ensure their accuracy, they should not be relied upon and potential buyers are advised to recheck the measurements.

