



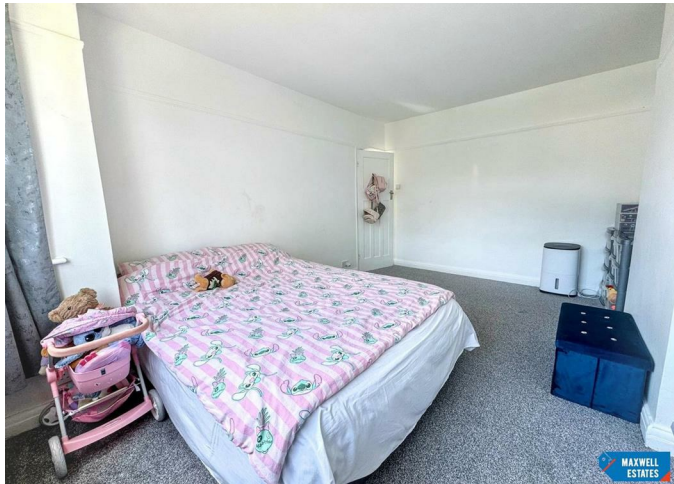
FREEHOLD

House - Semi-Detached

MILFORD GARDENS HA8 6EY

£560,000

FEATURES



3 Bedroom House - Semi-Detached located in Edgware

Maxwell Estates is pleased to present a well-maintained three-bedroom family home, ideally suited to growing families and buyers seeking generous living accommodation.

The property features two substantial double bedrooms and a single bedroom, complemented by a bathroom and a WC.

At the heart of the home is a bright and spacious through lounge, offering versatile living and dining space with plenty of natural light, ideal for both everyday living and entertaining. The property also benefits from a fitted kitchen.

Externally, the home boasts a private rear garden. To the front, a private driveway provides valuable off-street parking.

Located in a popular residential area, this attractive home combines generous internal space with excellent outdoor amenities, making it a fantastic purchase for families, first-time buyers, or investors alike.

Call us on

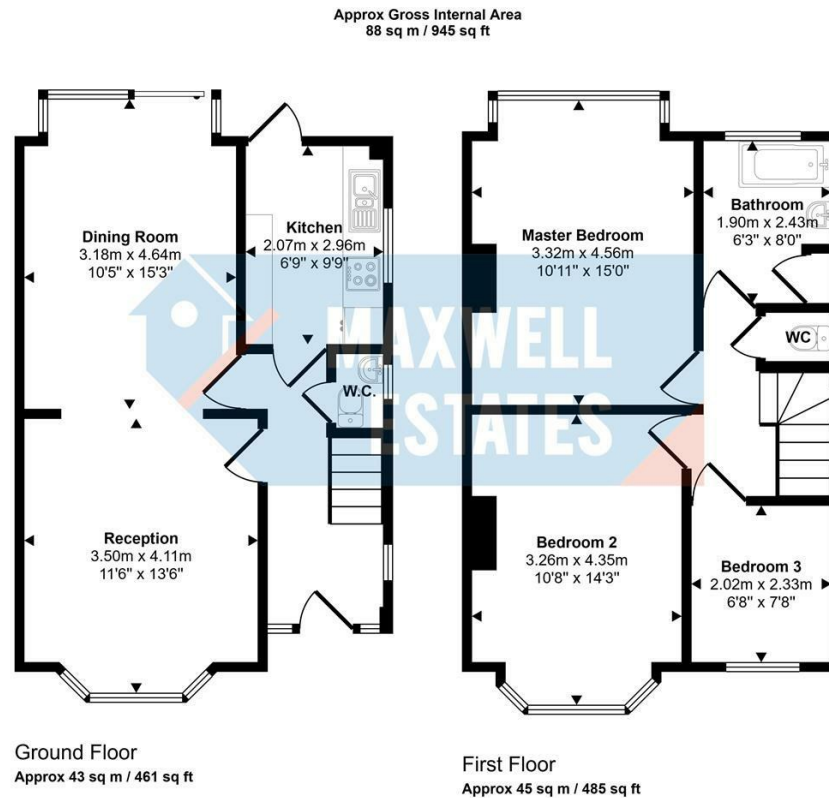
0208 959 0000

info@maxwellestates.co.uk

www.maxwellestates.co.uk

Council Tax Band

E



This floorplan is only for illustrative purposes and is not to scale. Measurements of rooms, doors, windows, and any items are approximate and no responsibility is taken for any error, omission or mis-statement. Icons of items such as bathroom suites are representations only and may not look like the real items. Made with Made Snappy 360.

| Energy Efficiency Rating | | Current | Potential |
|--|---|-------------------------|-----------|
| <i>Very energy efficient - lower running costs</i> | | | |
| (92 plus) | A | | |
| (81-91) | B | | 84 |
| (69-80) | C | | |
| (55-68) | D | 62 | |
| (39-54) | E | | |
| (21-38) | F | | |
| (1-20) | G | | |
| <i>Not energy efficient - higher running costs</i> | | | |
| England & Wales | | EU Directive 2002/91/EC | |

Agents Note: Whilst every care has been taken to prepare these particulars, they are for guidance purposes only. All measurements are approximate and are for general guidance purposes only and whilst every care has been taken to ensure their accuracy, they should not be relied upon and potential buyers are advised to recheck the measurements.

