

FREEHOLD



House - Terraced

TALGARTH WALK LONDON NW9 7HW

£350,000

FEATURES



1 Bedroom House - Terraced located in London

Maxwell Estates are pleased to present this well presented one bedroom property offers an excellent opportunity for first-time buyers, professionals, and investors alike.

The property boasts boasting a spacious double bedroom, bathroom, reception and kitchen area. The property further benefits from a private garden and parking, offering both outdoor space and convenience.

The property benefits from a convenient location with excellent transport connections, including nearby Hendon Railway Station and Colindale Underground Station, providing fast and direct access into Central London and beyond. Major road links including the A5 and A41 are also easily accessible.

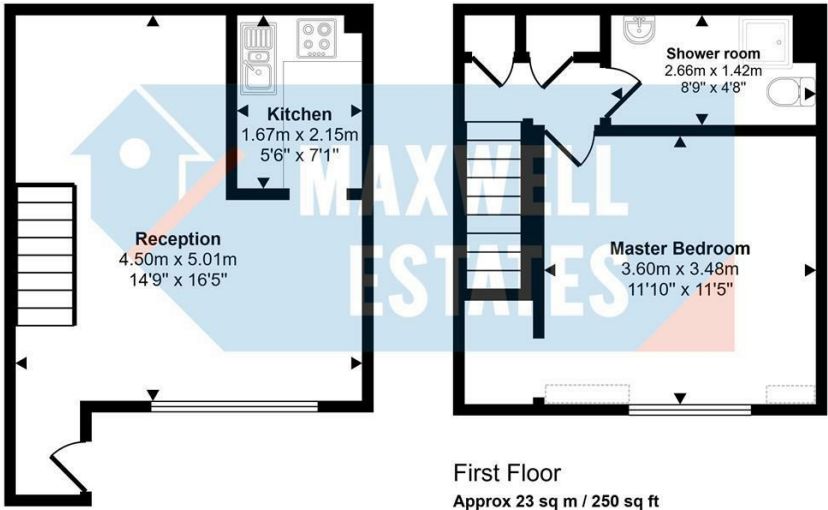
Residents enjoy a wide range of local amenities, with supermarkets, cafés, restaurants, and retail facilities all within easy reach. The area is well served by green open spaces, including Welsh Harp Reservoir and surrounding parkland, offering excellent opportunities for walking, cycling, and outdoor recreation.

Call us on
0208 959 0000

info@maxwellestates.co.uk
www.maxwellestates.co.uk

Council Tax Band
D

Approx Gross Internal Area
47 sq m / 502 sq ft



Ground Floor
Approx 23 sq m / 252 sq ft

Denotes head height below 1.5m

This floorplan is only for illustrative purposes and is not to scale. Measurements of rooms, doors, windows, and any items are approximate and no responsibility is taken for any error, omission or mis-statement. Icons of items such as bathroom suites are representations only and may not look like the real items. Made with Made Snappy 360.

Energy Efficiency Rating		Current	Potential
<i>Very energy efficient - lower running costs</i>			
(92 plus)	A		
(81-91)	B		
(69-80)	C		
(55-68)	D		
(39-54)	E		
(21-38)	F		
(1-20)	G		
<i>Not energy efficient - higher running costs</i>			
England & Wales		EU Directive 2002/91/EC	

Agents Note: Whilst every care has been taken to prepare these particulars, they are for guidance purposes only. All measurements are approximate and are for general guidance purposes only and whilst every care has been taken to ensure their accuracy, they should not be relied upon and potential buyers are advised to recheck the measurements.

