

FREEHOLD



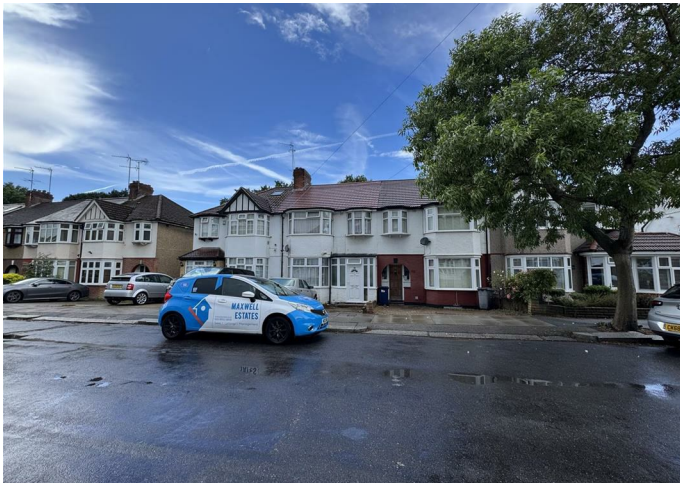
House - Terraced

COLIN GARDENS, LONDON NW9 6EJ

Offers Over

£540,000

FEATURES



4 Bedroom House - Terraced located in London

Spacious Four-Bedroom Family Home Backing onto Rushgrove Park

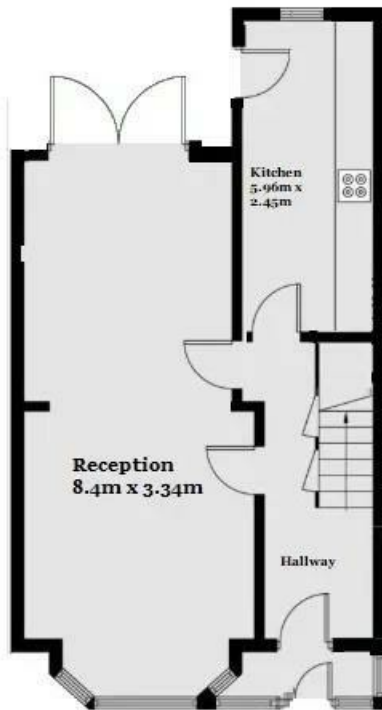
This large four-bedroom house is located on one of Colindale's most sought-after roads, with excellent access to the amenities of both Colindale and Hendon.

The property offers:

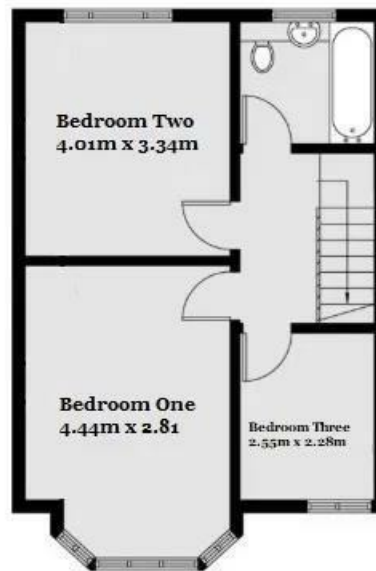
Four generously sized bedrooms

A bright and spacious reception room

Separate fitted kitchen



GROUND FLOOR



FIRST FLOOR



SECOND FLOOR

Call us on

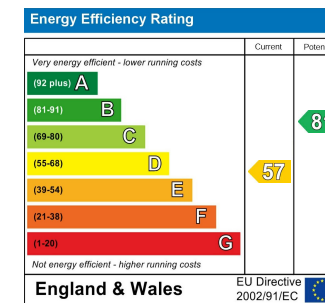
0208 959 0000

info@maxwellestates.co.uk

www.maxwellestates.co.uk

Council Tax Band

E



Agents Note: Whilst every care has been taken to prepare these particulars, they are for guidance purposes only. All measurements are approximate and are for general guidance purposes only and whilst every care has been taken to ensure their accuracy, they should not be relied upon and potential buyers are advised to recheck the measurements.

