

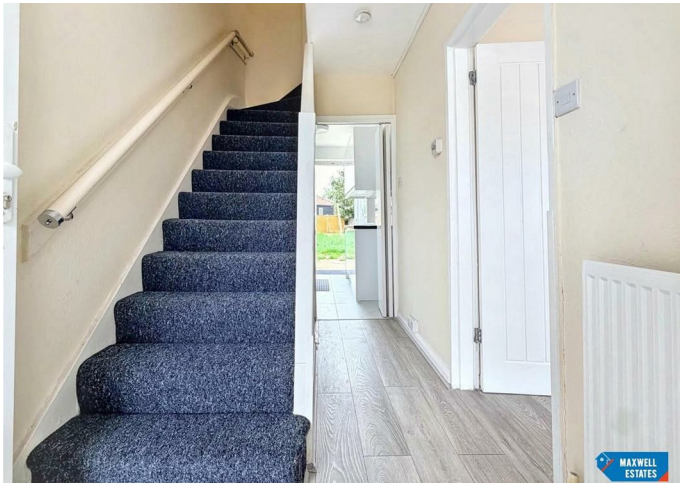


GOLDBEATERS GROVE EDGWARE HA8 0QE

Per Calendar Month

£2,300 Per

FEATURES



3 Bedroom House - Terraced located in Edgware

Maxwell Estates are delighted to offer this newly refurbished three-bedroom mid-terrace house, ideally located in Edgware.

This beautifully presented property comprises a bright and spacious through lounge, a separate modern kitchen, two generous double bedrooms, one single bedroom, and a well-sized family bathroom.

The property also benefits from a private driveway providing off-street parking for two cars and a large rear garden, making it an ideal home for families.

The property is conveniently located close to a wide range of local amenities and benefits from excellent transport links. Burnt Oak Underground Station (Northern Line) and Mill Hill Broadway Station (Thameslink) are both within easy reach, providing convenient access to Central London and surrounding areas.

The home is also close to the beautiful Watling Park & Woodcroft Park, both highly regarded green space offering extensive parkland, woodland walks, gardens, and recreational facilities. Families will also appreciate the proximity to the prestigious North London Collegiate School, one of the UK's leading independent schools, along with a range of other highly regarded local primary and secondary

Call us on


0208 959 0000

info@maxwellestates.co.uk

www.maxwellestates.co.uk

Council Tax Band

D

Energy Efficiency Rating		Current	Potential
<i>Very energy efficient - lower running costs</i>			
(92 plus) A			
(81-91) B			
(69-80) C			
(55-68) D			
(39-54) E			
(21-38) F			
(1-20) G			
<i>Not energy efficient - higher running costs</i>			
England & Wales		EU Directive 2002/91/EC	

Agents Note: Whilst every care has been taken to prepare these particulars, they are for guidance purposes only. All measurements are approximate and are for general guidance purposes only and whilst every care has been taken to ensure their accuracy, they should not be relied upon and potential buyers are advised to recheck the measurements.

