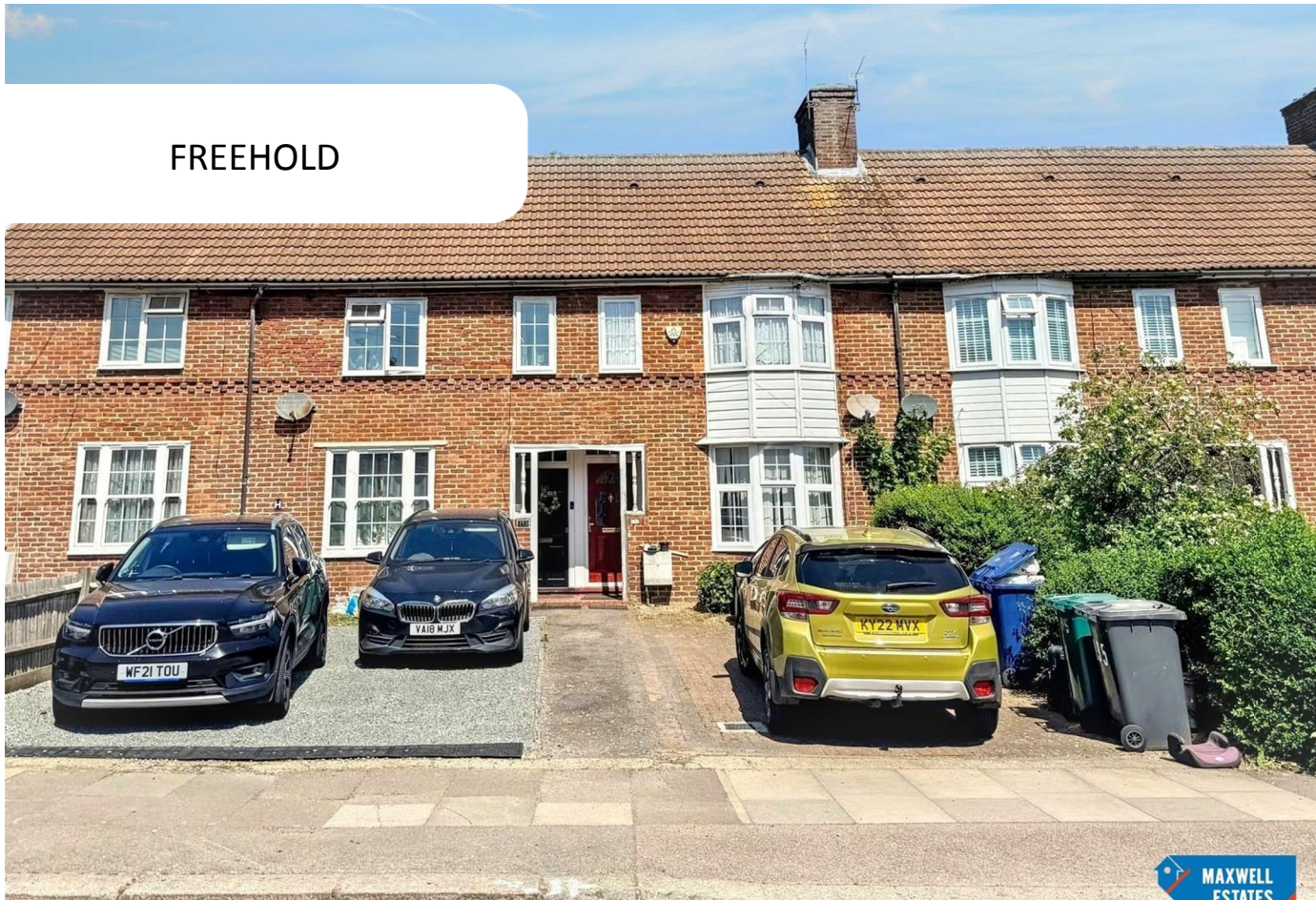


FREEHOLD

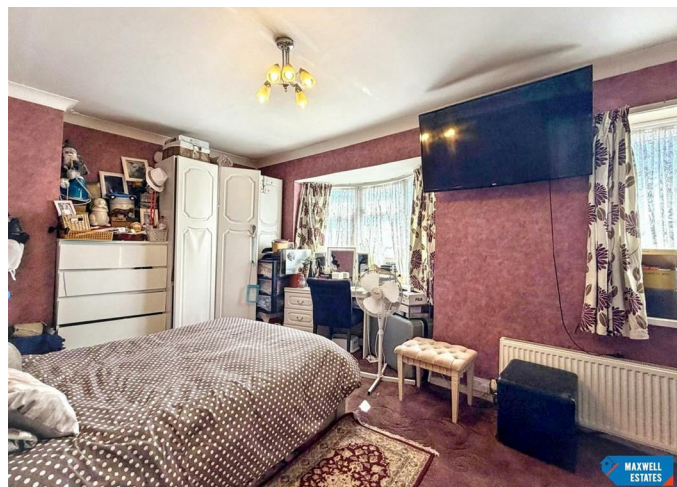
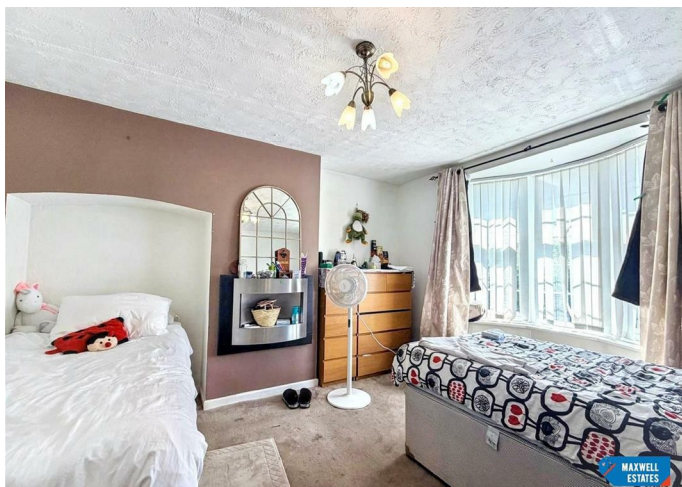


House - Terraced

195 WATLING AVENUE, EDGWARE, HA8 0NA

£460,000

FEATURES

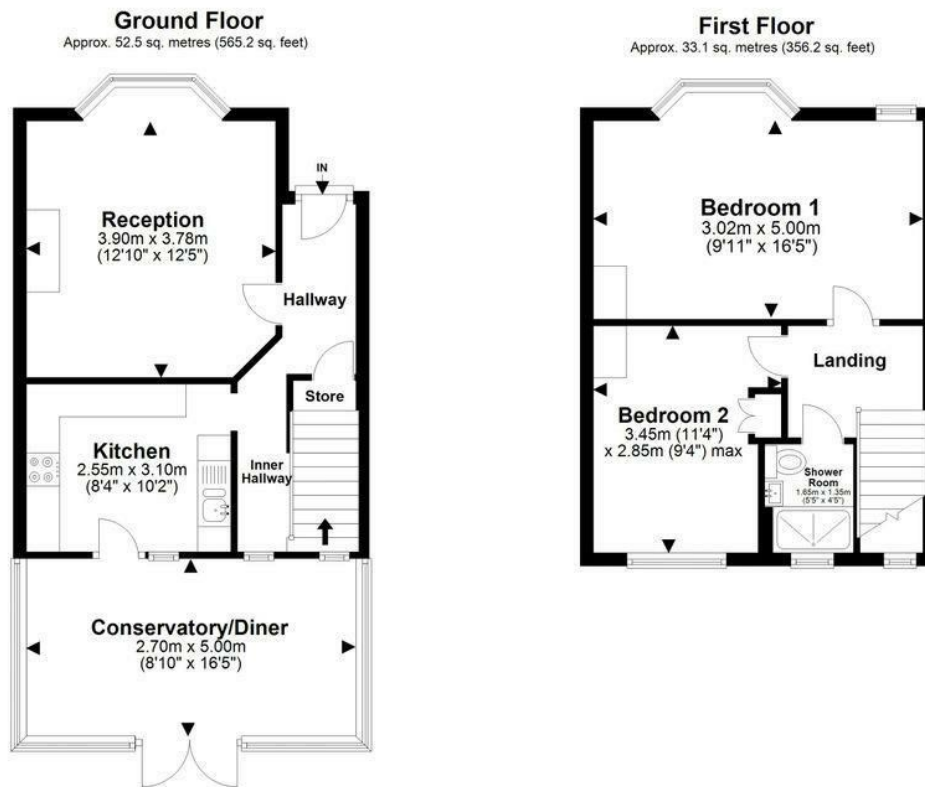


2 Bedroom House - Terraced located in Edgware

Maxwell Estates is pleased to present this well-presented two double bedroom home, ideally situated on the popular Watling Avenue and offering spacious accommodation throughout.

The property benefits from a bright reception room, kitchen, bathroom, and a conservatory. Further benefits include a private garden and a driveway providing off-street parking for up to two cars.

Conveniently located close to a range of local amenities including shops, supermarkets, cafes, and well-regarded schools, the property also offers excellent transport connections. Burnt Oak and Edgware Underground Stations (Northern Line) are both within easy reach, providing direct access into Central London, while numerous local bus routes and convenient access to the A5 and M1 make commuting simple.



Total area: approx. 85.6 sq. metres (921.4 sq. feet)

All images used are for illustrative purposes only. Floor plans are intended to give a general indication of the proposed layout only. All images and dimensions are not intended to form part any contract or warranty.
Plan produced using PlanUp.

Watling Avenue, Edgware, Middlesex, HA8 0NA

Call us on

0208 959 0000

info@maxwellestates.co.uk

www.maxwellestates.co.uk

Council Tax Band

C

Energy Efficiency Rating		Current	Potential
<i>Very energy efficient - lower running costs</i>			
(92 plus)	A		
(81-91)	B		82
(69-80)	C		
(55-68)	D	59	
(39-54)	E		
(21-38)	F		
(1-20)	G		
<i>Not energy efficient - higher running costs</i>			
England & Wales		EU Directive 2002/91/EC	

Agents Note: Whilst every care has been taken to prepare these particulars, they are for guidance purposes only. All measurements are approximate and are for general guidance purposes only and whilst every care has been taken to ensure their accuracy, they should not be relied upon and potential buyers are advised to recheck the measurements.

