



Apartment

WATLING AVENUE BURNT OAK HA8 0LU

Per Calendar Month

£1,700 pcm

FEATURES



2 Bedroom Apartment located in London

Call us on

0208 959 0000

info@maxwellestates.co.uk

www.maxwellestates.co.uk

Council Tax Band

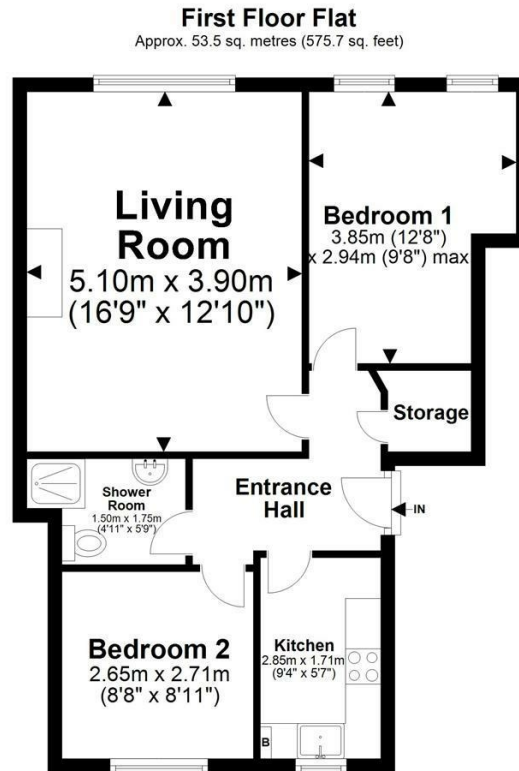
C

Maxwell Estates are delighted to offer this two bedroom first floor flat above a shop on Watling Avenue.

The flat boasts 2 bedrooms, a large reception area and a family bathroom. The property has access from the front.

The property is close to all essential amenities as it is located in the hustle and bustle of Watling Avenue. It offers great transport links from Burnt Oak Station (Northern Line) which is a 2 minute walk away.

Summary:
Above a shop
First floor flat
2 bedroom



Total area: approx. 53.5 sq. metres (575.7 sq. feet)

All images used are for illustrative purposes only. Floor plans are intended to give a general indication of the proposed layout only. All images and dimensions are not intended to form part any contract or warranty
Plan produced using PlanUp.

Watling Avenue, Edgware, HA8 0LU

Energy Efficiency Rating		Current	Potential
<i>Very energy efficient - lower running costs</i>			
(92 plus)	A		
(81-91)	B		
(69-80)	C		74
(55-68)	D	61	
(39-54)	E		
(21-38)	F		
(1-20)	G		
<i>Not energy efficient - higher running costs</i>			
England & Wales		EU Directive 2002/91/EC	

Agents Note: Whilst every care has been taken to prepare these particulars, they are for guidance purposes only. All measurements are approximate and are for general guidance purposes only and whilst every care has been taken to ensure their accuracy, they should not be relied upon and potential buyers are advised to recheck the measurements.

