

LEASEHOLD



Apartment

FLAT 15, FERNSIDE COURT HOLDERS HILL ROAD, LONDON, NW4 1JT

Offers Over

£450,000

FEATURES



3 Bedroom Apartment located in London

Call us on

0208 959 0000

info@maxwellestates.co.uk

www.maxwellestates.co.uk

Maxwell Estates are proud to present this spacious and well-maintained three-bedroom second floor flat, perfectly positioned in the highly sought-after area of Hendon. Offering an excellent balance of comfort, convenience, and practicality, this impressive property is ideal for families, first-time buyers, or investors alike.

Internally, the property boasts three generously proportioned bedrooms, each offering plenty of natural light and versatile living arrangements. A family bathroom complemented by an additional separate W/C, adding extra convenience for larger households or visiting guests. The property also benefits from residential parking with ample space for visitors.

Conveniently located just 0.7 miles of Mill Hill East Underground Station (Northern Line), the property benefits from superb transport connections into Central London and surrounding areas. Residents will also enjoy easy access to a wide range of local amenities including supermarkets, cafés, restaurants, highly regarded schools, parks, and leisure facilities.

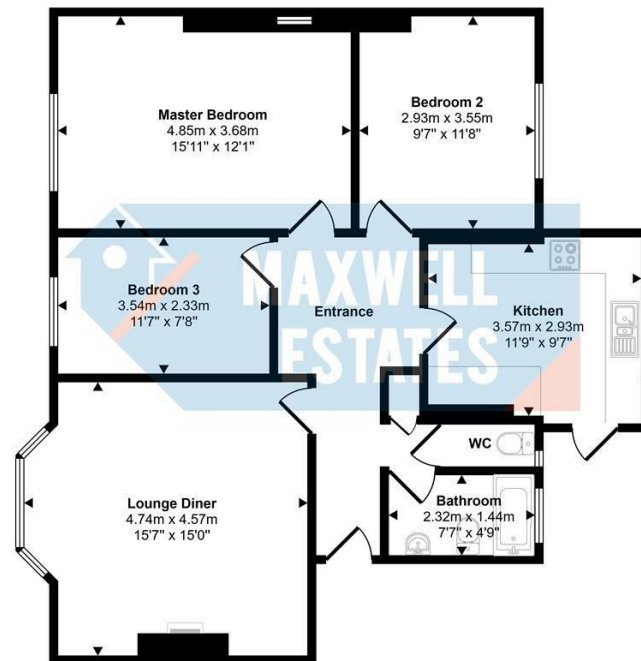
Annual Service Charge: £2,982

Annual Ground Rent: £150

Council Tax Band

D

Approx Gross Internal Area
87 sq m / 934 sq ft



Floorplan

This floorplan is only for illustrative purposes and is not to scale. Measurements of rooms, doors, windows, and any items are approximate and no responsibility is taken for any error, omission or mis-statement. Icons of items such as bathroom suites are representations only and may not look like the real items. Made with Made Snappy 360.

Energy Efficiency Rating		Current	Potential
<i>Very energy efficient - lower running costs</i>			
(92 plus)	A		
(81-91)	B		
(69-80)	C		
(55-68)	D		
(39-54)	E		
(21-38)	F		
(1-20)	G		
<i>Not energy efficient - higher running costs</i>			
England & Wales		EU Directive 2002/91/EC	

Agents Note: Whilst every care has been taken to prepare these particulars, they are for guidance purposes only. All measurements are approximate and are for general guidance purposes only and whilst every care has been taken to ensure their accuracy, they should not be relied upon and potential buyers are advised to recheck the measurements.

