

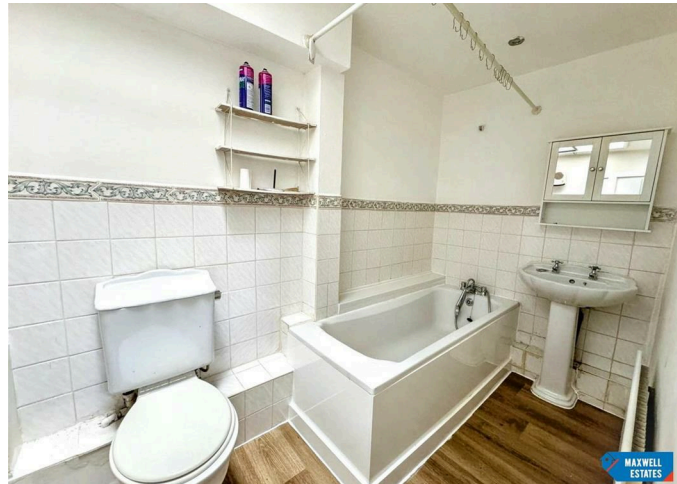
Studio

ELLESMERE AVENUE,
MILL HILL
LONDON
NW7 3HD

PCM

£1,150 PCM

FEATURES



1 Bedroom Studio located in London

Maxwell Estates are pleased to offer this well presented and spacious studio flat located on the sought after Ellesmere Avenue in Mill Hill (NW7). This bright property offers comfortable open plan living and benefits from a private garden.

One of the standout features of this property is its excellent transport links to the A1 & M1, making it an ideal choice for commuters.

With easy access to local amenities and public transport, the property is well connected to the surrounding areas, ensuring everything you need is within easy reach.

Ideal for a single professional or couple.

Summary:
Rent: £1,150pcm

Approx Gross Internal Area
31 sq m / 330 sq ft



Floorplan

This floorplan is only for illustrative purposes and is not to scale. Measurements of rooms, doors, windows, and any items are approximate and no responsibility is taken for any error, omission or mis-statement. Icons of items such as bathroom suites are representations only and may not look like the real items. Made with Made Snappy 360.

Call us on

0208 952 0808

info@maxwellestates.co.uk

www.maxwellestates.co.uk

Council Tax Band

B

Energy Efficiency Rating		Current	Potential
<i>Very energy efficient - lower running costs</i>			
(92 plus) A			
(81-91) B			
(69-80) C			
(55-68) D			67
(39-54) E	47		
(21-38) F			
(1-20) G			
<i>Not energy efficient - higher running costs</i>			
England & Wales		EU Directive 2002/91/EC	

Agents Note: Whilst every care has been taken to prepare these particulars, they are for guidance purposes only. All measurements are approximate and are for general guidance purposes only and whilst every care has been taken to ensure their accuracy, they should not be relied upon and potential buyers are advised to recheck the measurements.

