



House - Semi-Detached

**TURNER ROAD
EDGWARE
LONDON
HA8 6AT**

PCM

£2,400 PCM

FEATURES



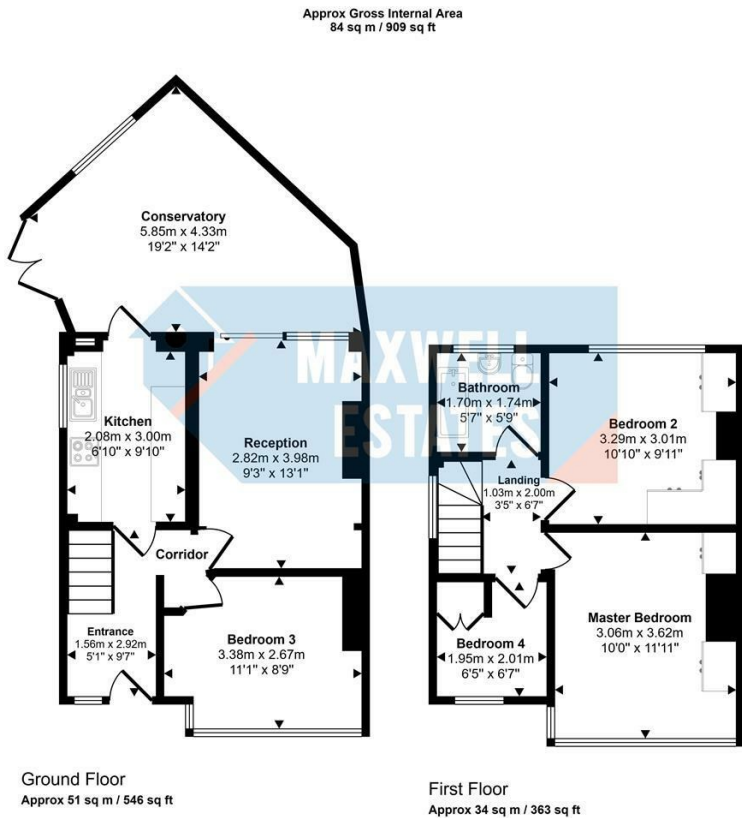
3 Bedroom House - Semi-Detached located in London

Maxwell Estates is delighted to present this newly refurbished three-bedroom, one bathroom house, ideally located on Turner Road, Edgware.

The property features two reception rooms, a modern fitted kitchen, three good-sized bedrooms, and one bathroom. Off-street parking is available on the driveway.

The house offers excellent access to local amenities, shops, and schools. It's also well connected for transport, with Queensbury Underground Station (Jubilee Line) nearby.

- Key Features:
- Newly refurbished
 - Two receptions
 - Modern fitted kitchen
 - 3 bedrooms



This floorplan is only for illustrative purposes and is not to scale. Measurements of rooms, doors, windows, and any items are approximate and no responsibility is taken for any error, omission or mis-statement. Icons of items such as bathroom suites are representations only and may not look like the real items. Made with Made Snappy 360.

Call us on
0208 952 0808

info@maxwellestates.co.uk
www.maxwellestates.co.uk

Council Tax Band
D

Energy Efficiency Rating		
	Current	Potential
Very energy efficient - lower running costs		
(92 plus) A		
(81-91) B		
(69-80) C		
(55-68) D		
(39-54) E		
(21-38) F		
(1-20) G		
Not energy efficient - higher running costs		
England & Wales		EU Directive 2002/91/EC

Agents Note: Whilst every care has been taken to prepare these particulars, they are for guidance purposes only. All measurements are approximate and are for general guidance purposes only and whilst every care has been taken to ensure their accuracy, they should not be relied upon and potential buyers are advised to recheck the measurements.

