

LEASEHOLD



Maisonette

70 EDGEWORTH
CLOSE, LONDON,
NW4 4HN

Offers In The Region Of

£360,000

FEATURES



2 Bedroom Maisonette located in London

Maxwell Estates is pleased to present this two-bedroom ground floor maisonette, ideally located just moments from Hendon Tube Station (Northern Line).

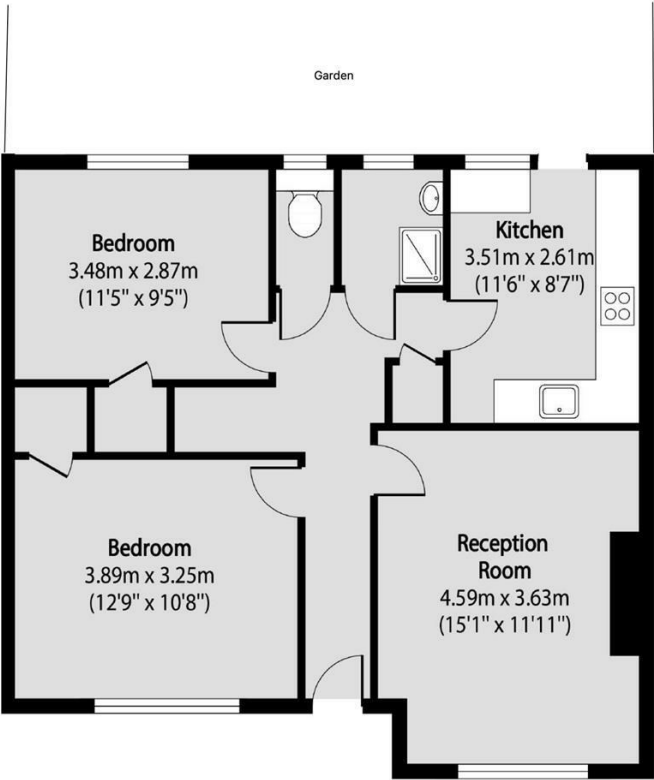
Situated within close proximity to a wide range of local amenities, this property offers excellent transport links and convenient access to shops, schools, and other essential services.

The accommodation comprises two bedrooms, a spacious living room, a separate kitchen, a bathroom, and both front and rear gardens.

Please note: The property requires full renovation, offering a fantastic opportunity for buyers or investors to modernise and add value.

Lease remaining: 90 Years

Service Charge: £119 P/M



All images used are for illustrative purposes only. Floor plan are intended to give a general indication of proposed layout only. All images and dimensions do not form of any contract or warranty.
Plan produced using PlanUp.

Total area (approx): 65.66 sq m (707 sq. ft)

Call us on
0208 952 0808

info@maxwellestates.co.uk
www.maxwellestates.co.uk

Council Tax Band
C

Energy Efficiency Rating		
	Current	Potential
Very energy efficient - lower running costs		
(92 plus) A		
(81-91) B		
(69-80) C		
(55-68) D		
(39-54) E		
(21-38) F		
(1-20) G		
Not energy efficient - higher running costs		
England & Wales		EU Directive 2002/91/EC

Agents Note: Whilst every care has been taken to prepare these particulars, they are for guidance purposes only. All measurements are approximate and are for general guidance purposes only and whilst every care has been taken to ensure their accuracy, they should not be relied upon and potential buyers are advised to recheck the measurements.

