

LEASEHOLD



Maisonette

EDGEWORTH CLOSE, LONDON NW4 4HN

Asking Price

£300,000

FEATURES



2 Bedroom Maisonette located in London

Call us on

0208 952 0808

info@maxwellestates.co.uk

www.maxwellestates.co.uk

Maxwell Estates is pleased to present this two-bedroom ground floor maisonette, ideally located just moments from Hendon Tube Station (Northern Line).

Situated within close proximity to a wide range of local amenities, this property offers excellent transport links and convenient access to shops, schools, and other essential services.

The accommodation comprises two bedrooms, a spacious living room, a separate kitchen, a bathroom, and both front and rear gardens.

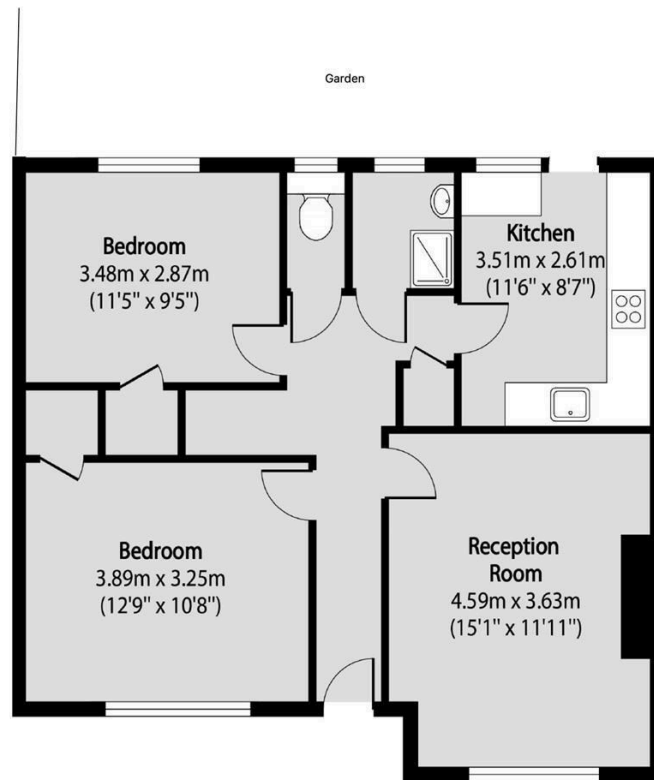
Please note: The property requires full renovation, offering a fantastic opportunity for buyers or investors to modernise and add value.

Lease remaining: 90 Years

Service Charge: £119 P/M

Council Tax Band

C



All images used are for illustrative purposes only. Floor plan are intended to give a general indication of proposed layout only. All images and dimensions do not form any contract or warranty.
Plan produced using PlanUp.

Total area (approx): 65.66 sq m (707 sq. ft)

Energy Efficiency Rating		
	Current	Potential
<i>Very energy efficient - lower running costs</i>		
(92 plus) A		
(81-91) B		
(69-80) C		
(55-68) D		
(39-54) E		
(21-38) F		
(1-20) G		
<i>Not energy efficient - higher running costs</i>		
England & Wales		EU Directive 2002/91/EC

Agents Note: Whilst every care has been taken to prepare these particulars, they are for guidance purposes only. All measurements are approximate and are for general guidance purposes only and whilst every care has been taken to ensure their accuracy, they should not be relied upon and potential buyers are advised to recheck the measurements.

