

LEASEHOLD

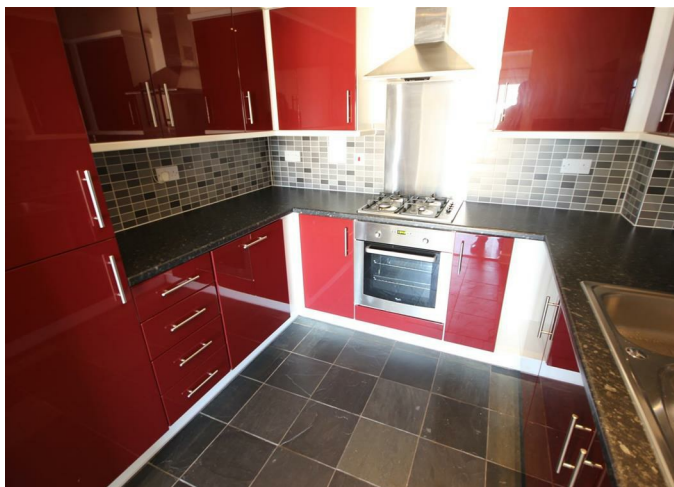
Apartment

28 DA VINCI COURT,
CEZANNE ROAD,
WATFORD, WD25 9BF

Asking Price

£275,000

FEATURES



2 Bedroom Apartment located in Watford

Call us on
0208 952 0808
info@maxwellestates.co.uk
www.maxwellestates.co.uk

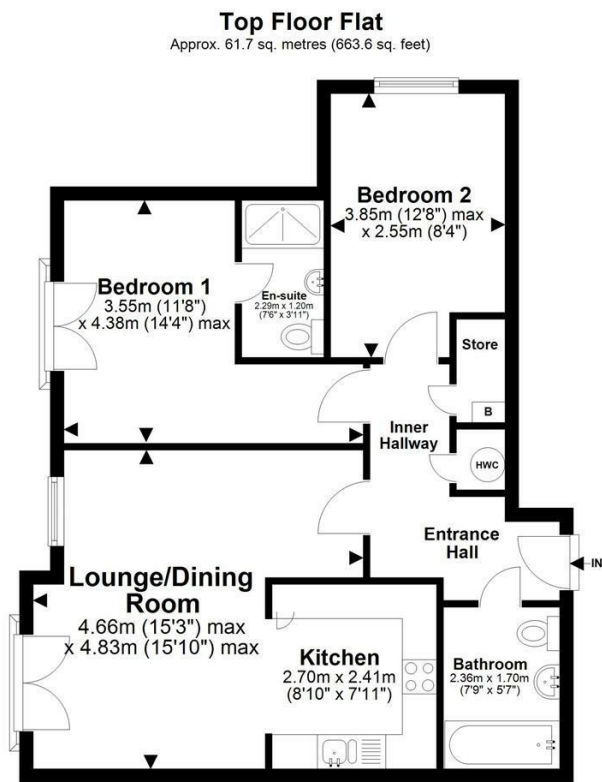
Maxwell Estates are proud to present this sizeable contemporary two-bedroom, two-bathroom third floor flat in Watford.

The development is located close by to the amenities of both Garston & Watford, catering for all needs with excellent transport links. Easy access to M25 and M1.

Allocated parking
No lift
No Chain
(Pictures prior to occupation)

Available for viewings now!

Council Tax Band
C



Total area: approx. 61.7 sq. metres (663.6 sq. feet)

All images used are for illustrative purposes only. Floor plan are intended to give a general indication of proposed layout only. All images and dimensions do not form of any contract or warranty.
Plan produced using PlanUp.

Da Vinci Court, Cezanne Road, Watford, WD25 9BF

Energy Efficiency Rating		
	Current	Potential
Very energy efficient - lower running costs		
(92 plus) A		
(81-91) B		
(69-80) C		
(55-68) D		
(39-54) E		
(21-38) F		
(1-20) G		
Not energy efficient - higher running costs		
England & Wales		EU Directive 2002/91/EC

Agents Note: Whilst every care has been taken to prepare these particulars, they are for guidance purposes only. All measurements are approximate and are for general guidance purposes only and whilst every care has been taken to ensure their accuracy, they should not be relied upon and potential buyers are advised to recheck the measurements.

