



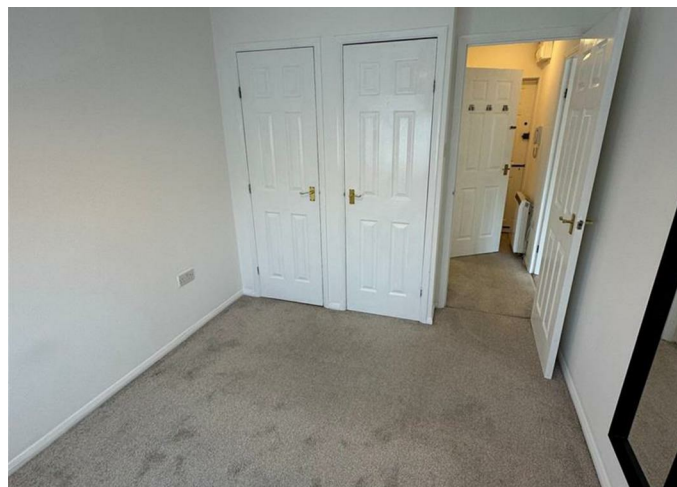
Apartment

## 2 EAGLE DRIVE LONDON NW9 5BD

Per Calendar Month

# £1,400 Per

FEATURES



# 1 Bedroom Apartment located in London

A one-bedroom flat located in the Lapwing Court development, moments from the heart of Colindale. This purpose-built property offers a living room with an open-plan kitchen, one bedroom, a bathroom. This flat also boasts the added benefit of an allocated parking space and access to communal gardens.

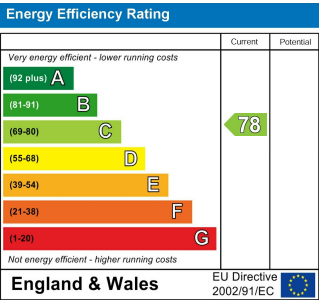
The property is ideally situated close to a variety of local shopping and dining options. Colindale Underground Station (Northern Line) is just a short walk away, providing excellent transport links into Central London and beyond. Montrose Park is nearby, offering green open spaces for recreation and relaxation.

With easy access to public transport, local shops, and green spaces, this flat is perfect for professionals, couples, or small families looking for comfort and convenience in a vibrant North London neighbourhood.

Key Features:  
One reception

Call us on  
**0208 952 0808**  
[info@maxwellestates.co.uk](mailto:info@maxwellestates.co.uk)  
[www.maxwellestates.co.uk](http://www.maxwellestates.co.uk)

Council Tax Band  
**B**



Agents Note: Whilst every care has been taken to prepare these particulars, they are for guidance purposes only. All measurements are approximate and are for general guidance purposes only and whilst every care has been taken to ensure their accuracy, they should not be relied upon and potential buyers are advised to recheck the measurements.

