

FREEHOLD



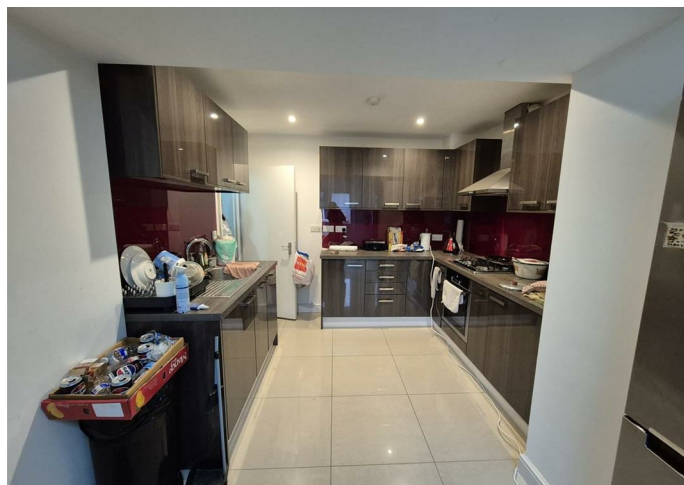
House - Terraced

WATLING AVENUE, BURNT OAK, EDGWARE

Offers Over

£490,000

FEATURES



2 Bedroom House - Terraced located in Edgware

Charming 2-Bedroom Extended Mid-Terraced Home in Burnt Oak

Nestled in the heart of Burnt Oak, this beautifully refurbished mid-terraced home offers the perfect blend of comfort and convenience. Boasting 985 square feet of well-designed living space, this property is ideal for families, professionals, or anyone seeking a stylish and practical home.

Key Features:

2 Spacious Bedrooms: Including a unique loft room accessed through the master bedroom, perfect for a home office, additional storage, or cozy retreat.

2 Modern Bathrooms: Finished to a high standard for added comfort and convenience.

Extended Kitchen: A sleek and functional space ideal for cooking and entertaining.

Outbuilding: Providing versatile additional space—ideal for a home gym, office, or storage.

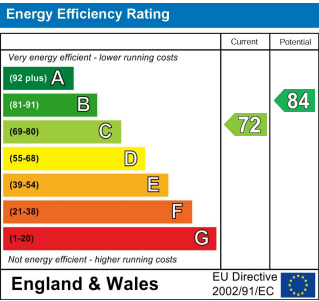
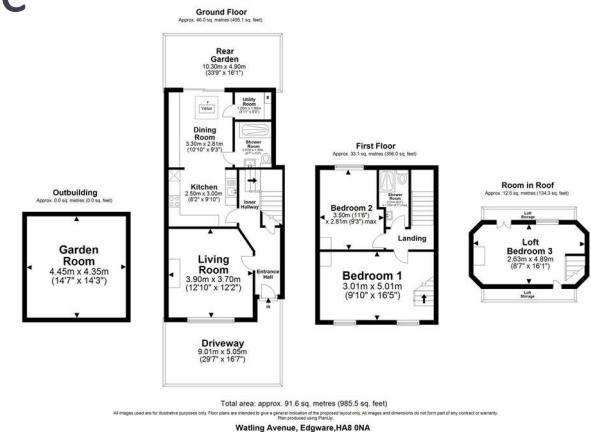
Prime Location: Situated close to Burnt Oak Tube Station, ensuring excellent transport links, and within walking distance of local shops, restaurants, and amenities.

This home has been recently refurbished to a high standard, offering modern finishes throughout while retaining its warm and inviting atmosphere.

Don't miss this opportunity to own a home in one of Burnt Oak's most sought-after locations! Contact us today to arrange a viewing.

Call us on
0208 952 0808
info@maxwellestates.co.uk
www.maxwellestates.co.uk

Council Tax Band
C



Agents Note: Whilst every care has been taken to prepare these particulars, they are for guidance purposes only. All measurements are approximate and are for general guidance purposes only and whilst every care has been taken to ensure their accuracy, they should not be relied upon and potential buyers are advised to recheck the measurements.

