



House - Semi-Detached

54 HOLYROOD GARDENS, EDGWARE, MIDDLESEX, HA8 5LR

£550,000

FEATURES



3 Bedroom House - Semi-Detached located in Edgware

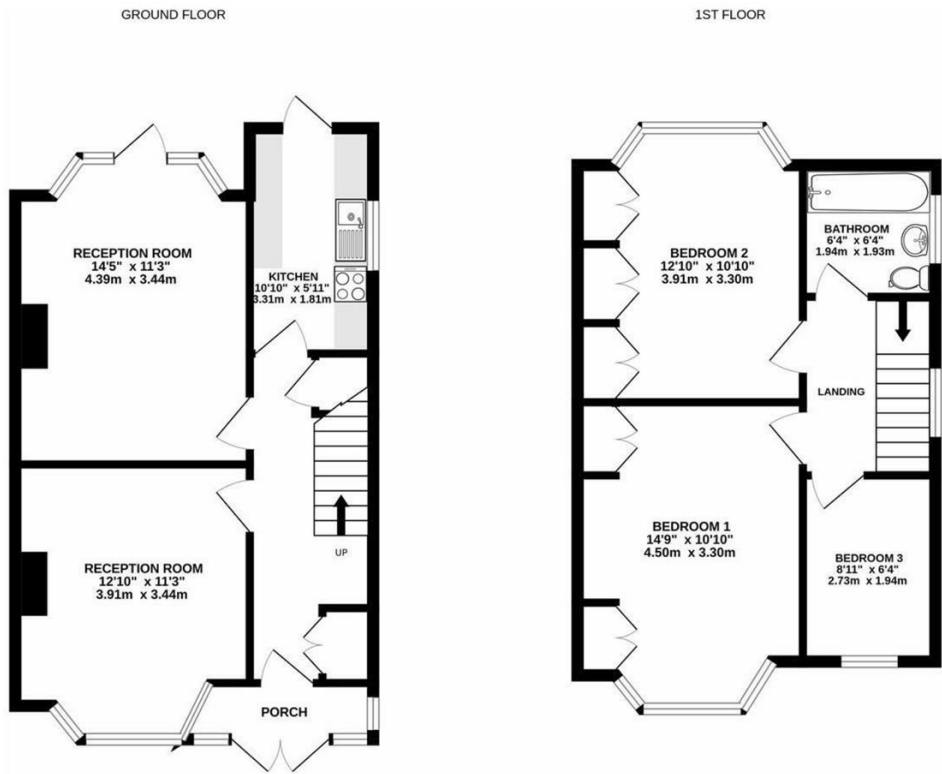
Maxwell Estates are pleased to offer this 3 bedroom, 1 bathroom, 2 reception family home. Located in Edgware, this property is within walking distance to Burnt Oak Underground Station (Northern Line), Queensbury Underground station (Jubilee Line) and all essential amenities. The property also benefits from private parking, a well sized garden and garage.

- Key features:
- 2 Receptions
 - 3 Bedrooms
 - 1 Bathroom
 - Garden/parking

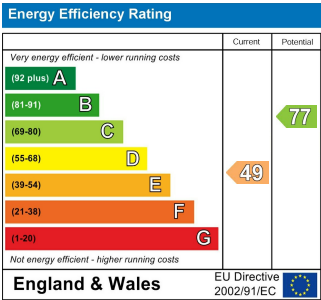
Landlords Requirement:
NO SHARERS/HMO

Call us on
0208 952 0808
info@maxwellestates.co.uk
www.maxwellestates.co.uk

Council Tax Band
E



TOTAL FLOOR AREA : 911 sq.ft. (84.6 sq.m.) approx.
Whilst every attempt has been made to ensure the accuracy of the floorplan contained here, measurements of doors, windows, rooms and any other items are approximate and no responsibility is taken for any error, omission or mis-statement. This plan is for illustrative purposes only and should be used as such by any prospective purchaser. The services, systems and appliances shown have not been tested and no guarantee as to their operability or efficiency can be given.



Agents Note: Whilst every care has been taken to prepare these particulars, they are for guidance purposes only. All measurements are approximate and are for general guidance purposes only and whilst every care has been taken to ensure their accuracy, they should not be relied upon and potential buyers are advised to recheck the measurements.

