

FREEHOLD



House - Semi-Detached

18 THE GREENWAY,  
COLINDALE,  
LONDON, NW9 5BY

Guide Price

£520,000

FEATURES



# 3 Bedroom House - Semi-Detached located in London

Sold off-market.

Welcome to The Greenway, Colindale, London - a charming semi-detached house with great potential! This property boasts two reception rooms, three bedrooms, and a bathroom, offering ample space for a comfortable living experience. Although it requires full refurbishment, this presents a fantastic opportunity for you to create your dream home exactly to your taste and style.

Situated in a prime location, this property is conveniently close to local amenities, making daily errands a breeze. Additionally, the proximity to Burnt Oak Tube Station ensures easy access to the rest of London, perfect for those who enjoy exploring the city or commuting for work.

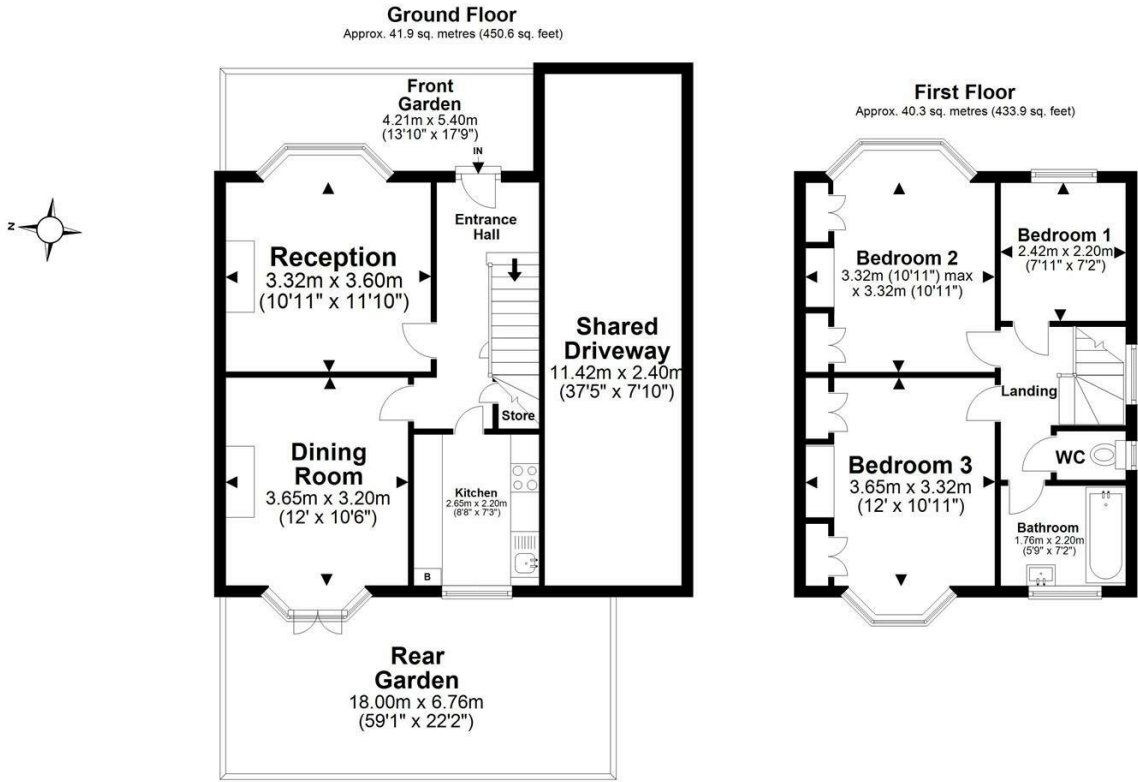
With three bedrooms, there is plenty of room for a growing family or for those who desire extra space for guests or a home office. The semi-detached nature of the house provides a sense of privacy and tranquillity.

Don't miss out on the opportunity to transform this property into a beautiful and functional home that suits your lifestyle. Embrace the blank canvas that awaits you at The Greenway - your future home in the heart of Colindale, London.

Call us on  
0208 952 0808

info@maxwellestates.co.uk  
www.maxwellestates.co.uk

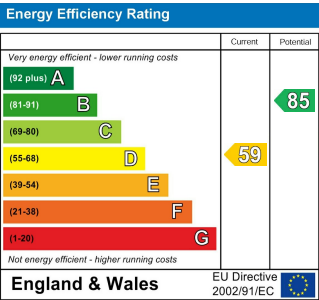
Council Tax Band  
E



Total area: approx. 82.2 sq. metres (884.5 sq. feet)

All images used are for illustrative purposes only. Floor plans are intended to give a general indication of the proposed layout only. All images and dimensions are not intended to form part of any contract or warranty. This floor plan has been prepared exclusively for the use of Maxwell Estate Ltd  
Plan produced using PlanUp.

The Greenway, London NW9 5BY



Agents Note: Whilst every care has been taken to prepare these particulars, they are for guidance purposes only. All measurements are approximate and are for general guidance purposes only and whilst every care has been taken to ensure their accuracy, they should not be relied upon and potential buyers are advised to recheck the measurements.

