

LEASEHOLD



Flat - Penthouse

1, CELESTE HOUSE,
FLAT 91 CAVERSHAM
ROAD, LONDON,
NW9 4DT

Guide Price

£850,000

FEATURES



3 Bedroom Flat - Penthouse located in London



HEAD OFFICE SALES | 70 WATLING AVENUE, EDGWARE, LONDON, HA8 0LU

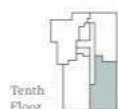
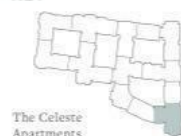
The Celeste Apartments

TENTH FLOOR

2460 - 3 Bedroom Premier	112.1 sq m	1,207 sq ft
Living Space	8.74m x 4.67m	28' 8" x 15' 4"
Bedroom 1	4.25m x 3.16m	14' 0" x 10' 4"
Bedroom 2	2.98m x 3.00m	9' 9" x 9' 8"
Bedroom 3	3.61m x 2.75m	11' 8" x 9' 0"
Terrace	7.3 sq m	79 sq ft



KEY



- Double interlocked window
- Single window high level
- Single window
- USB port
- Tripod Unit (TV + BT + BT)
- BT master socket
- Video entry phone
- Towel rail
- Panel heater
- Cupboard
- External tap
- Relax
- Wardrobe
- Hot water cylinder
- Washer / dryer
- External lighting

Floor plans shown are approximate measurements only. Exact layout and sizes may vary. All measurements may vary within a tolerance of 5%.

Call us on

0208 952 0808

info@maxwellestates.co.uk

www.maxwellestates.co.uk

Council Tax Band

E

Energy Efficiency Rating		
	Current	Potential
Very energy efficient - lower running costs		
(92 plus) A		
(81-91) B		
(69-80) C		
(55-68) D		
(39-54) E		
(21-38) F		
(1-20) G		
Not energy efficient - higher running costs		
England & Wales	EU Directive 2002/91/EC	

Agents Note: Whilst every care has been taken to prepare these particulars, they are for guidance purposes only. All measurements are approximate and are for general guidance purposes only and whilst every care has been taken to ensure their accuracy, they should not be relied upon and potential buyers are advised to recheck the measurements.

