



Apartment

# 18 SPRINGWELL APARTMENTS COLNEBANK DRIVE, WATFORD, HERTFORDSHIRE,

PCM

## £1,350 PCM

FEATURES

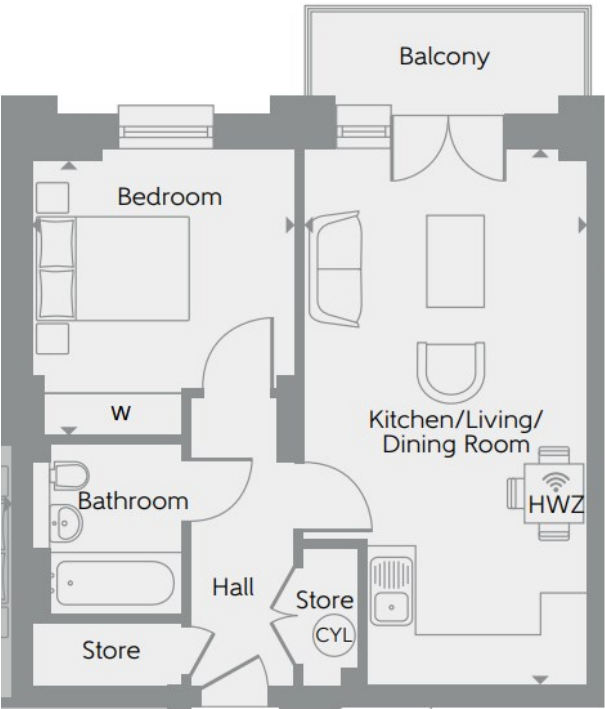


# 1 Bedroom Apartment located in Hertfordshire

Maxwell Estates are pleased to present this stunning 1-bedroom second floor apartment in Watford. The property features an open-plan kitchen, living area, a well-equipped bathroom and a large balcony. Waterside at Riverwell is situated on Thomas Sawyer Road, alongside the River Colne and less than two miles by car from Watford town centre. The property is located less than 20 minutes' walk from the town's main shopping centre: INTU Watford. Well-known and independent retailers can also be found in the roads surrounding the mall, including along High Street, Queen's Road and St Albans Road.

Watford and Bushey railway stations are both around a mile away and can be reached in less than 20 minutes on foot.

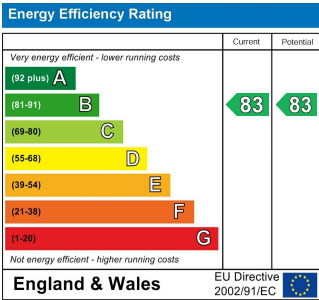
- Key features:
- Audio visual door entry system
  - Lift
  - Integrated kitchen appliances



Kitchen/Living/ Dining Room	6.922m x 3.690m	22'9" x 12'1"
Bedroom	3.714m x 3.379m	12'2" x 11'1"
Balcony		
<b>Total area</b>	<b>50 sq.m.</b>	<b>536 sq.ft.</b>

Call us on  
**0208 952 0808**  
[info@maxwellestates.co.uk](mailto:info@maxwellestates.co.uk)  
[www.maxwellestates.co.uk](http://www.maxwellestates.co.uk)

Council Tax Band  
**C**



Agents Note: Whilst every care has been taken to prepare these particulars, they are for guidance purposes only. All measurements are approximate and are for general guidance purposes only and whilst every care has been taken to ensure their accuracy, they should not be relied upon and potential buyers are advised to recheck the measurements.

