



House - End Terrace

GREEN BANK, LONDON, N12 8AS

PCM

£2,500 PCM

FEATURES

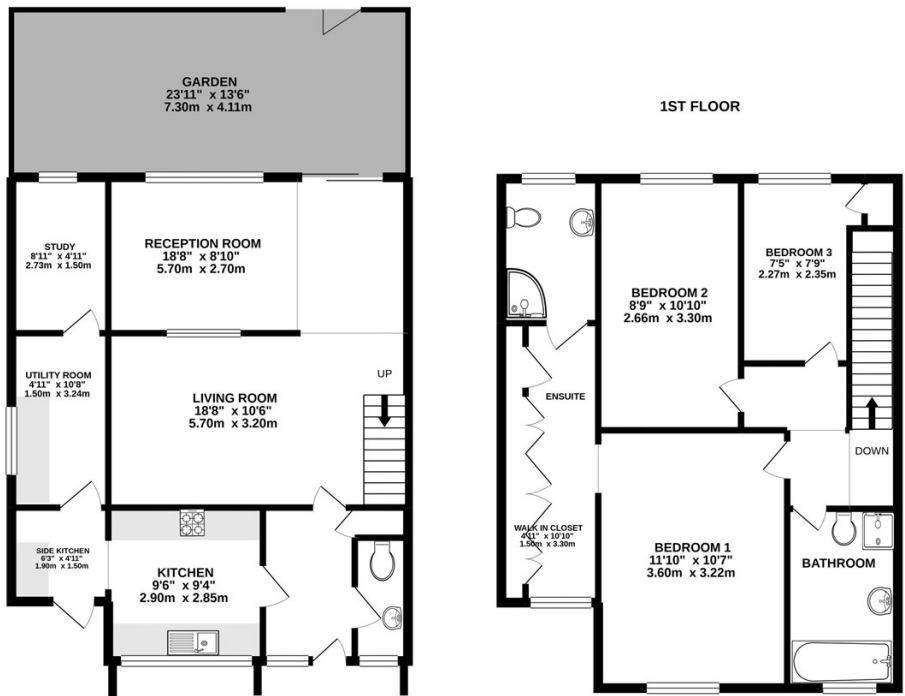


3 Bedroom House - End Terrace located in London

On offer with Maxwell Estates is this fully furnished modernised 3-bedroom end-of-terrace family home. The property is located within walking distance to Woodside Park Underground Station (Northern Line), and all essential amenities along with Outstanding Ofsted rated schools within 1-mile radius. The property offers 3 spacious bedrooms, a modern fully fitted kitchen, two bathrooms (One en-suite), extra W/C, utility room, study room and a rear garden. No driveway.

Call us now to arrange a viewing!

Summary:
Rent Amount: £2,500.00 per month
Deposit: £2,884.00
Available from 18th December 2023



TOTAL FLOOR AREA : 1216sq.ft. (113.0 sq.m.) approx.
Whilst every attempt has been made to ensure the accuracy of the floorplan contained here, measurements of doors, windows, rooms and any other items are approximate and no responsibility is taken for any error, omission or mis-statement. This plan is for illustrative purposes only and should be used as such by any prospective purchaser. The services, systems and appliances shown have not been tested and no guarantee as to their operability or efficiency can be given.
Made with Metropix ©2020

Call us on
0208 952 0808
info@maxwellestates.co.uk
www.maxwellestates.co.uk

Council Tax Band
E

Energy Efficiency Rating		
	Current	Potential
Very energy efficient - lower running costs		
(92 plus) A		
(81-91) B		
(69-80) C		
(55-68) D		
(39-54) E		
(21-38) F		
(1-20) G		
Not energy efficient - higher running costs		
England & Wales	EU Directive 2002/91/EC	

Agents Note: Whilst every care has been taken to prepare these particulars, they are for guidance purposes only. All measurements are approximate and are for general guidance purposes only and whilst every care has been taken to ensure their accuracy, they should not be relied upon and potential buyers are advised to recheck the measurements.

