



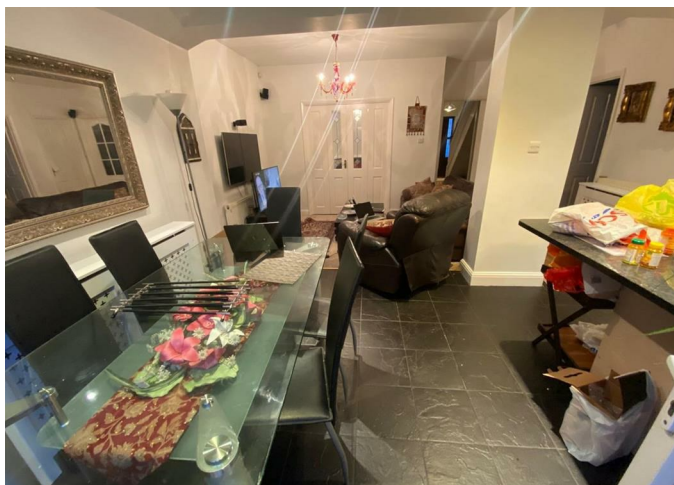
House - Semi-Detached

42 ENGEL PARK,  
LONDON, NW7 2HP

PCM

£2,800 PCM

FEATURES



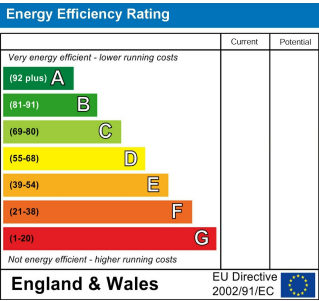
# 5 Bedroom House - Semi-Detached located in London

Maxwell Estates are delighted to offer this large 5 bedroom, 3 bathroom extended family home. The property is located in a quiet residential area in Mill Hill and within walking distance to Bittacy Hill Park and Mill Hill East Underground Station (Northern Line)  
The property is available fully furnished and benefits from a large garden with a patio and an outhouse in the rear of the garden and last but not least a spacious off-street parking for up to 4 cars.

- Key features:
- Open plan kitchen with dining area
  - 2 Receptions
  - 5 Bedrooms
  - 3 Bathrooms
  - Large Garden
  - Spacious Patio

Call us on  
**0208 952 0808**  
[info@maxwellestates.co.uk](mailto:info@maxwellestates.co.uk)  
[www.maxwellestates.co.uk](http://www.maxwellestates.co.uk)

Council Tax Band  
**E**



Agents Note: Whilst every care has been taken to prepare these particulars, they are for guidance purposes only. All measurements are approximate and are for general guidance purposes only and whilst every care has been taken to ensure their accuracy, they should not be relied upon and potential buyers are advised to recheck the measurements.

