

FREEHOLD



House - Semi-Detached

15 BIRCHWOOD COURT, EDGWARE, LONDON, HA8 5JE

Offers In The Region Of

£800,000

FEATURES

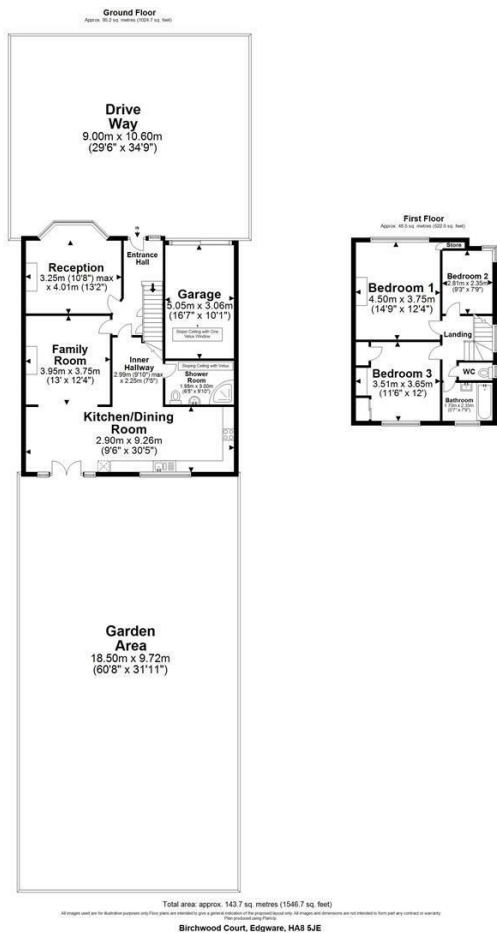
- Large Garden
- 3 Bedrooms
- 2 Bathrooms
- 2 Living rooms
- Garage



3 Bedroom House - Semi-Detached located in London


On offer exclusively with Maxwell Estates is this beautiful family home comprising of 3 bedrooms, 2 bathrooms, kitchen & dining area with open plan lounge, second living room currently used as the fourth bedroom, large garden, garage and a driveway to accommodate 2 cars. Potential to further extend stpp. Located in a quiet cul du sac and within walking distance to all local amenities and Burnt Oak Underground tube station.

Perfect family home! Book your viewings in asap to avoid disappointment!



Call us on
0208 952 0808
info@maxwellestates.co.uk
www.maxwellestates.co.uk

Council Tax Band
E

Energy Efficiency Rating		
	Current	Potential
Very energy efficient - lower running costs		
(92 plus) A		
(81-91) B		
(69-80) C		
(55-68) D		
(39-54) E		
(21-38) F		
(1-20) G		
Not energy efficient - higher running costs		
England & Wales	EU Directive 2002/91/EC 	

Agents Note: Whilst every care has been taken to prepare these particulars, they are for guidance purposes only. All measurements are approximate and are for general guidance purposes only and whilst every care has been taken to ensure their accuracy, they should not be relied upon and potential buyers are advised to recheck the measurements.

